

Data sheet for SIMOTICS S-1FK7



Figure similar

Ordering data 1FK7044-7AF71-1KH0

Client order no. :
Order no. :
Offer no. :
Remarks :

Item no. :
Consignment no. :
Project :

Engineering data		Physical constants	
Rated speed	3000 rpm	Torque constant	0.86 Nm/A
Number of poles	6	Voltage constant at 20° C	57.0 V/1000*min ⁻¹
Rated torque (100 K)	3.5 Nm	Winding resistance at 20° C	1.50 Ω
Rated current	4.0 A	Rotating field inductance	20.0 mH
Static torque (60 K)	3.00 Nm	Electrical time constant	13.30 ms
Static torque (100 K)	4.0 Nm	Mechanical time constant	0.78 ms
Stall current (60 K)	3.4 A	Thermal time constant	45 min
Stall current (100 K)	4.5 A	Shaft torsional stiffness	9500 Nm/rad
Rotor moment of inertia	1.410 kgcm ²	Net weight of the motor	8.3 kg
Efficiency	91.0 %		

Mechanical data			
Motor type	High Dynamic	Electrical connectors	Connectors for signals and power rotatable
Shaft height	48	Color of the housing	unpainted
Cooling	Natural cooling	Holding brake	with holding brake
Radial runout tolerance	0.040 mm	Shaft extension	Plain shaft
Concentricity tolerance	0.08 mm	Encoder system	Encoder AM16DQ: absolute encoder 16 bits (resolution 65536, encoder-internal 32 S/R) + 12 bits multi-turn (traversing range 4096 revolutions)
Axial runout tolerance	0.08 mm		
Vibration severity grade	Grade A		
Connector size	1		
Degree of protection	IP64		
Design acc. to Code I	IM B5 (IM V1, IM V3)		
Temperature monitoring	KTY84 temperature sensor in the stator winding		

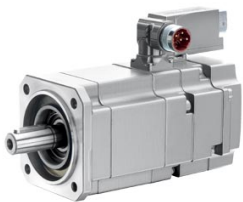


Figure similar

Ordering data 1FK7044-7AF71-1KH0

Optimum operating point		Recommended Motor Module	
Optimum speed	3000 rpm	Rated inverter current	5 A
Optimum power	1.1 kW	Maximum inverter current	10 A
		Maximum torque	8.80 Nm