

Project: **Gearbox Dynamometer**

Location: Worldwide
Year: since 2001



- Type: MKH445L04
- Power: 630 kW
- Voltage: 690 V
- Cooling: water - cooled
- Quantity: 5 pieces
- Appliance: Gearbox
Dynamometer

Project: **Vessel with jack-up platform**

Location: Dubai

Year: 2008



- Type: MKH745D04
- Power: 725 kW
- Voltage: 690 V
- Cooling: water - cooled
- Quantity: 4 pieces
- Standard: ABS
- Appliance: Thruster

Project: **Pumped storage hydro power station
Heiterwang**

Location: Reutte
Year: 2009



- Type: MKH750C06
- Power: 1200 kW
- Voltage: 690 V
- Cooling: water - cooled
- Quantity: 3 pieces
- Appliance: Pump Station

Project: **Steel plant “Acerinox Malaysia”**

Location: Malaysia

Year: 2009



- Type: 2x MKH763E10
1x MKH750B06
2x MKH745B06
2x MKH735E06
2x MKH735D06
2x MKH731E06
- Power: 224 - 1860 kW
- Voltage: 460 - 690 V
- Cooling: water – cooled
- Appliance: Stainless steel mill

Project: **Extruder for film stretching line**

Location: Worldwide

Year: since 2001

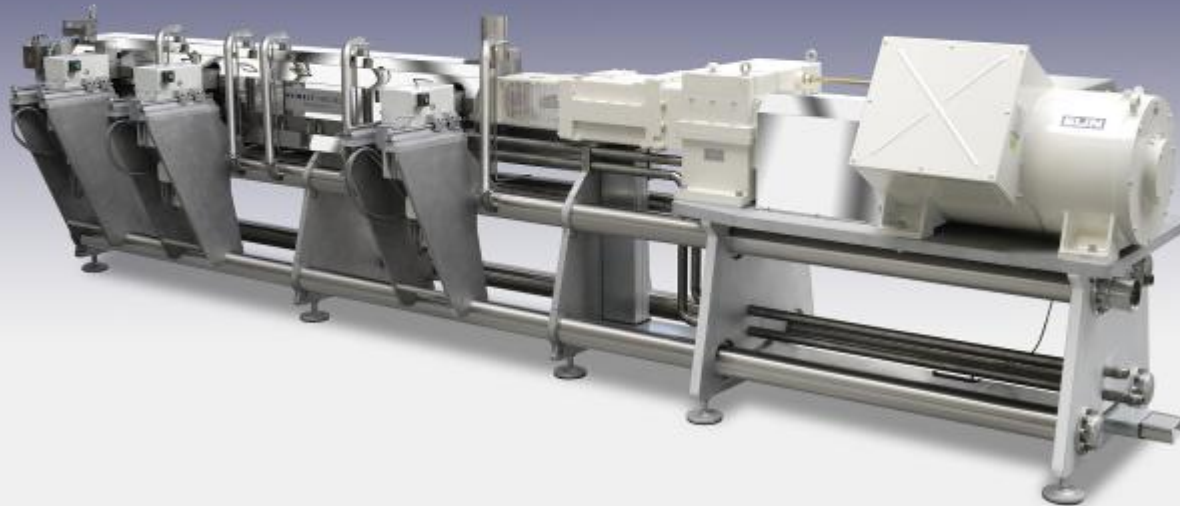


- Type: MKH720 - 750
MKH820 - 850
- Power: 75 – 1900 kW
- Voltage: 400 – 690 V
- Cooling: water - cooled
- Quantity: 523 pieces
(01/2001 – 11/2012)
- Appliance: Extruder

Project: **Double Screw Compounder**

Location: Worldwide

Year: 2007



- Type: MKH725 - 731
- Power: 132 - 315 kW
- Voltage: 400 V
- Cooling: water - cooled
- Quantity: 2 pieces
- Appliance: Biopolymer Extruder

REIMELT | HENSCHEL
MischSysteme

Project: **Compounder**

Location: Worldwide
Year: since 2002



- Type: MKH720 - 750
MKH820 - 850
- Power: 37 – 1636 kW
- Voltage: 380 – 690 V
- Cooling: water - cooled
- Quantity: 440 pieces
(01/2002 – 11/2012)
- Appliance: Twin-screw Extruder

Project: **Extruder for Thermoplastic**

Location: Worldwide
Year: since 2000



- Type: various MKH-7/8
- Power: 30 – 1320 kW
- Voltage: 380 – 690 V
- Cooling: water - cooled
- Quantity: 400 pieces
(01/2000 – 11/2012)
- Appliance: Extruder



Leistritz
LEISTRITZ EXTRUSIONSTECHNIK GMBH

Project: **Twin-screw co-rotating extruder**

Location: Worldwide
Year: since 2006



- Type: MKH720 - 745
MKH820 - 845
- Power: 45 - 980 kW
- Voltage: 400 – 690 V
- Cooling: water - cooled
- Quantity: 21 pieces
(01/2006 – 08/2012)
- Appliance: Extruder



Project: **HIGH SPEED stretch-film-line**

Location: Worldwide

Year: since 2009



- Type: MKH725F04
- Power: 200 kW
- Voltage: 400 V
- Cooling: water - cooled
- Quantity: 80 pieces
(01/2009 – 08/2012)
- Appliance: Stretchwrap Extrusion

Project: **Mixer**

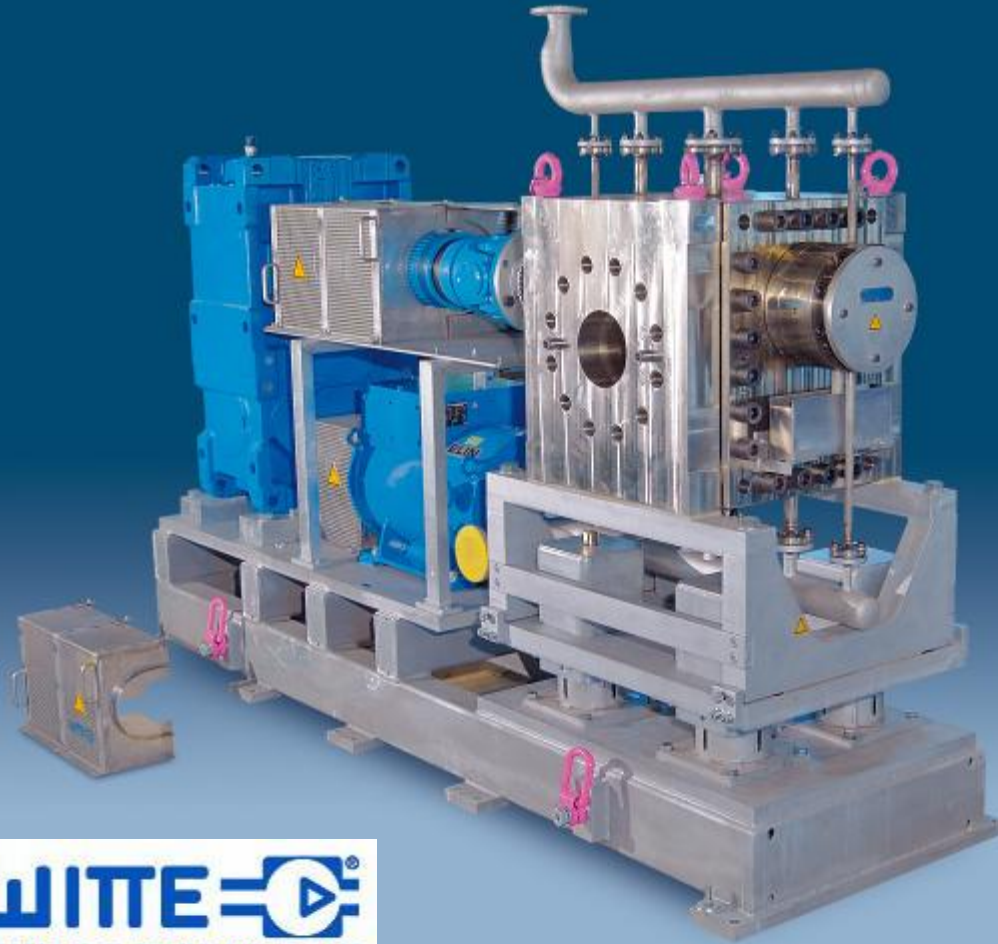
Location: Kraiburg
Year: since 2005



- Type: MKH-735-745
- Power: 500 - 700 kW
- Voltage: 690 V
- Cooling: water - cooled
- Quantity: 4 pieces
(2005/06)
- Appliance: Tandemmotor for Mixer

Project: **Gear Pump for Extrusion**

Location: Germany
Year: since 2008



- Type: MKH920 - 725
- Power: 90 - 132 kW
- Voltage: 400 - 690 V
- Cooling: water - cooled
- Quantity: 5 pieces
(01/2008 – 08/2012)
- Appliance: Extrusion-Gear Pump
additional for pressure
rise in average up to
highly viscous media

Project: **Injection Moulding Machine**

Location: Worldwide
Year: since 1997



- Type: MKH-720 A-E04
- Power: 37 – 90 kW
- Voltage: 380 – 480 V
- Cooling: water - cooled
- Quantity: 1,020 pieces
(07/1997 – 05/2006)
- Appliance: Hydraulic Pumps

Project: **Injection Moulding Machine**

Location: Worldwide
Year: since 2002



- Type: MUP-125 A-F04
- Power: 55 – 200KW
- Voltage: 380 – 400 V
- Cooling: oil - cooled
- Quantity: 89 pieces
(01/2002 – 02/2006)
- Appliance: Hydraulic Pumps

Project: **Injection Moulding Machine**

Location: Worldwide
Year: since 2002



- Type: MUP
- Power: 90 – 250 kW
- Voltage: 380 – 480 V
- Cooling: oil - cooled
- Appliance: Hydraulic Pumps



Project: **Injection Moulding Machine – Model MC**

Location: Worldwide
Year: since 1997



- Type: MKH525-635
- Power: 90 – 250 kW
- Voltage: 380 – 480 V
- Cooling: oil - cooled
- Quantity: 575 pieces
(07/1997 – 05/2006)
- Appliance: Hydraulic Pumps

Project: 2 TBM Ø 6,4m – Chongqing

Location: China
Year: 2009



- Type: MKH735U06
- Power: 330 kW
- Voltage: 690 V
- Cooling: water - cooled
- Quantity: 2 x 7 pieces
- Appliance: Cutter Head Drive

Copyright © by



Project: 2 TBM Ø 10,2m – Emisor

Location: Mexico

Year: 2009



- Type: MKH640K06
- Power: 190 kW
- Voltage: 690 V
- Cooling: water - cooled
- Quantity: 2 x 15 pieces
- Appliance: Cutter Head Drive



Copyright © by



Project: 2 TBM Ø 10,2m – West Qinling

Location: China

Year: 2009



- Type: MKH735U06
- Power: 330 kW
- Voltage: 690 V
- Cooling: water - cooled
- Quantity: 2 x 12 pieces
- Appliance: Cutter Head Drive

Copyright © by



Project: 2 TBM Ø 10,0m – Andhra Pradesh

Location: India

Year: 2006/2007



- Type: MKH635A06
- Power: 315 kW
- Voltage: 690 V
- Cooling: water - cooled
- Quantity: 2 x 12 pieces
- Appliance: Cutter Head Drive



Copyright © by



Project: 2 TBM Ø 5,8m – Yin Tao

Location: Water diversion project at Tahoe river in China

Year: 2008



- Type: MKH735U06
- Power: 275 kW
- Voltage: 690 V
- Cooling: water - cooled
- Quantity: 2 x 7 pieces
- Appliance: Cutter Head Drive



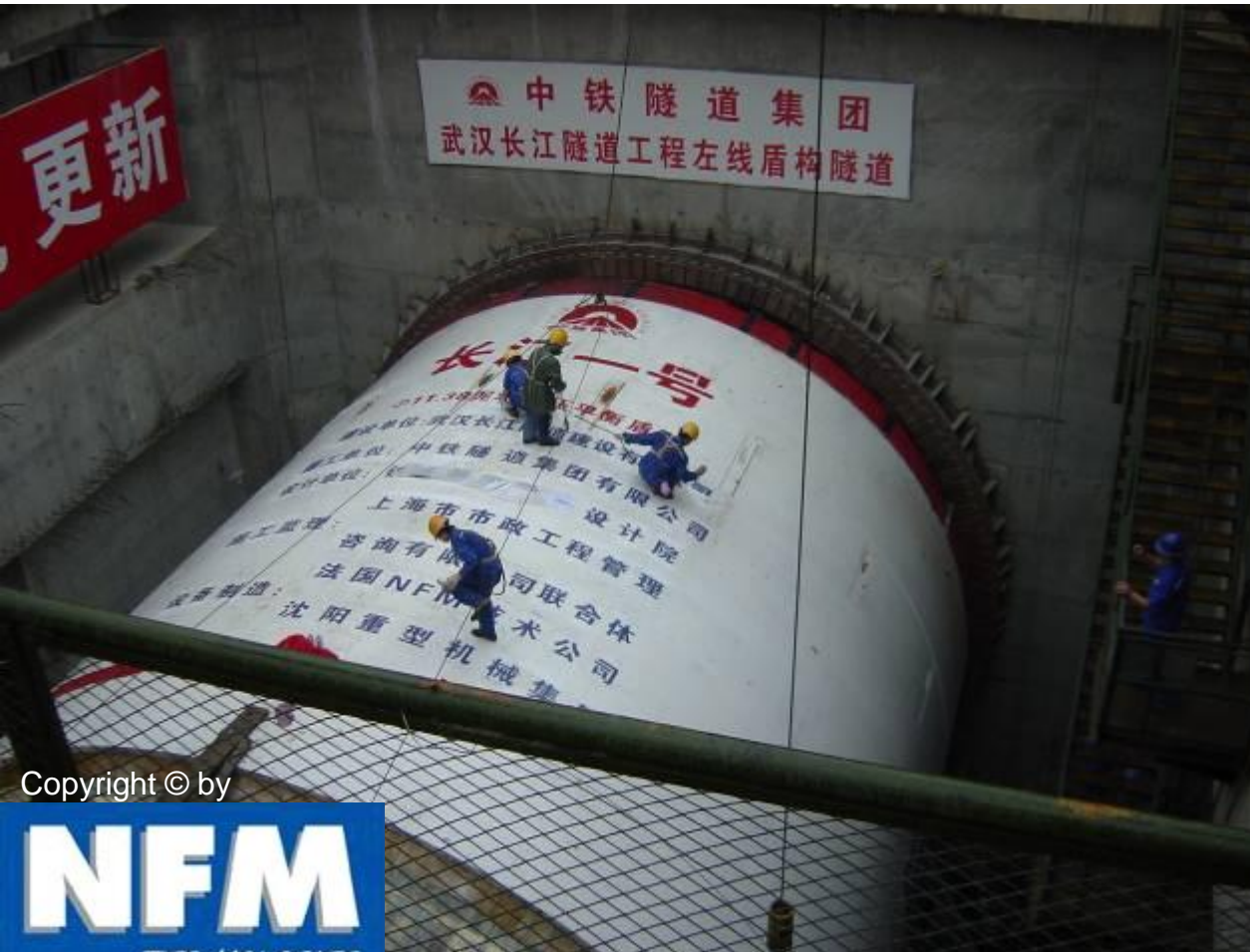
Copyright © by



Project: 2 TBM Ø 6,3m – Wuhan

Location: China

Year: 2006



- Type: MKH728C06
- Power: 206 kW
- Voltage: 582 V
- Cooling: water - cooled
- Quantity: 2 x 8 pieces
- Appliance: Cutter Head Drive

Copyright © by



Project: **TBM Ø 14,9m – Groene Hart**

Location: Netherlands

Year: 2000



- Type: MKH445J04
MKH435L06
- Power: 660 kW
690 kW
- Voltage: 690 V
- Cooling: water - cooled
- Quantity: 8 pieces
15 pieces
- Appliance: Cutter Head Drive

Copyright © by



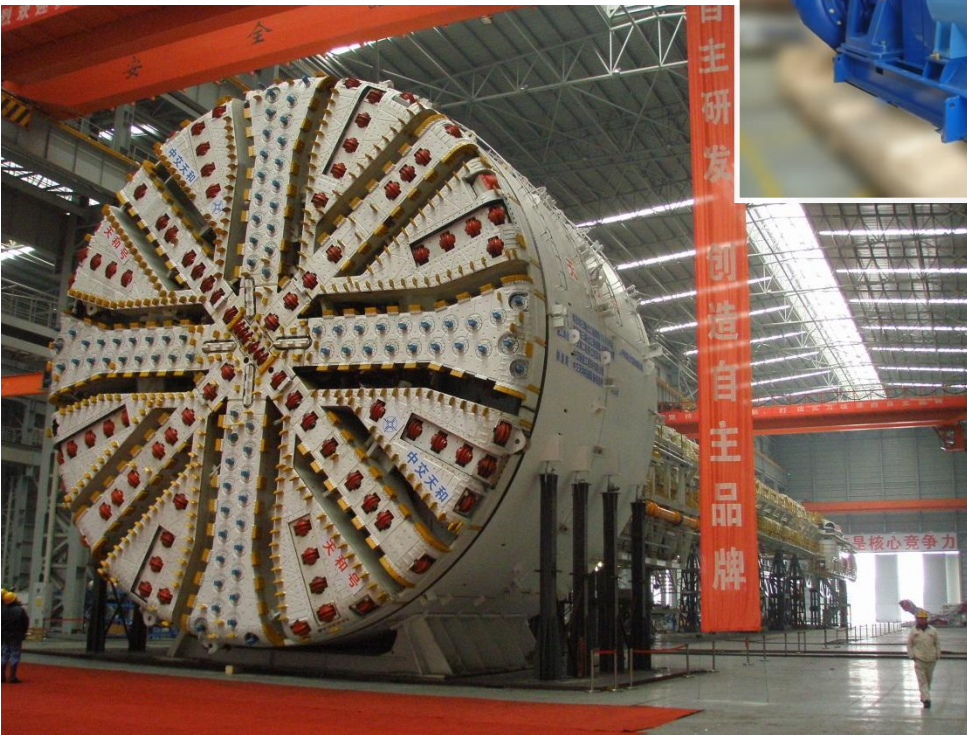
Project: 2 Mixshield TBM Ø 14,93m

Location: China, Nanjing

Year: 2011



 **MITSUBISHI HEAVY INDUSTRIES, LTD.**



Copyright© by
IHI 

- Type: MKH635B06 + Safeset
 - Power: 250 kW
 - Voltage: 380 V
 - Cooling: water - cooled
 - Quantity: 30 pieces
 - Appliance: Cutter Head Drive
-
- Type: MKH750E06
 - Power: 1025 kW & 1100 kW
 - Voltage: 690 V
 - Cooling: water - cooled
 - Quantity: 10 pieces
 - Appliance: Feed- and Slurry Pump

Project: 2 TBM Ø 15,1m – Madrid M30

Location: Spain

Year: 2004



- Type: MKH640K06
- Power: 358 kW
- Voltage: 690 V
- Cooling: water - cooled
- Quantity: 2 x 14 pieces
- Appliance: Cutter Head Drive

Project: 2 TBM Ø 12,5m - Brisbane

Location: Australia

Year: 2009

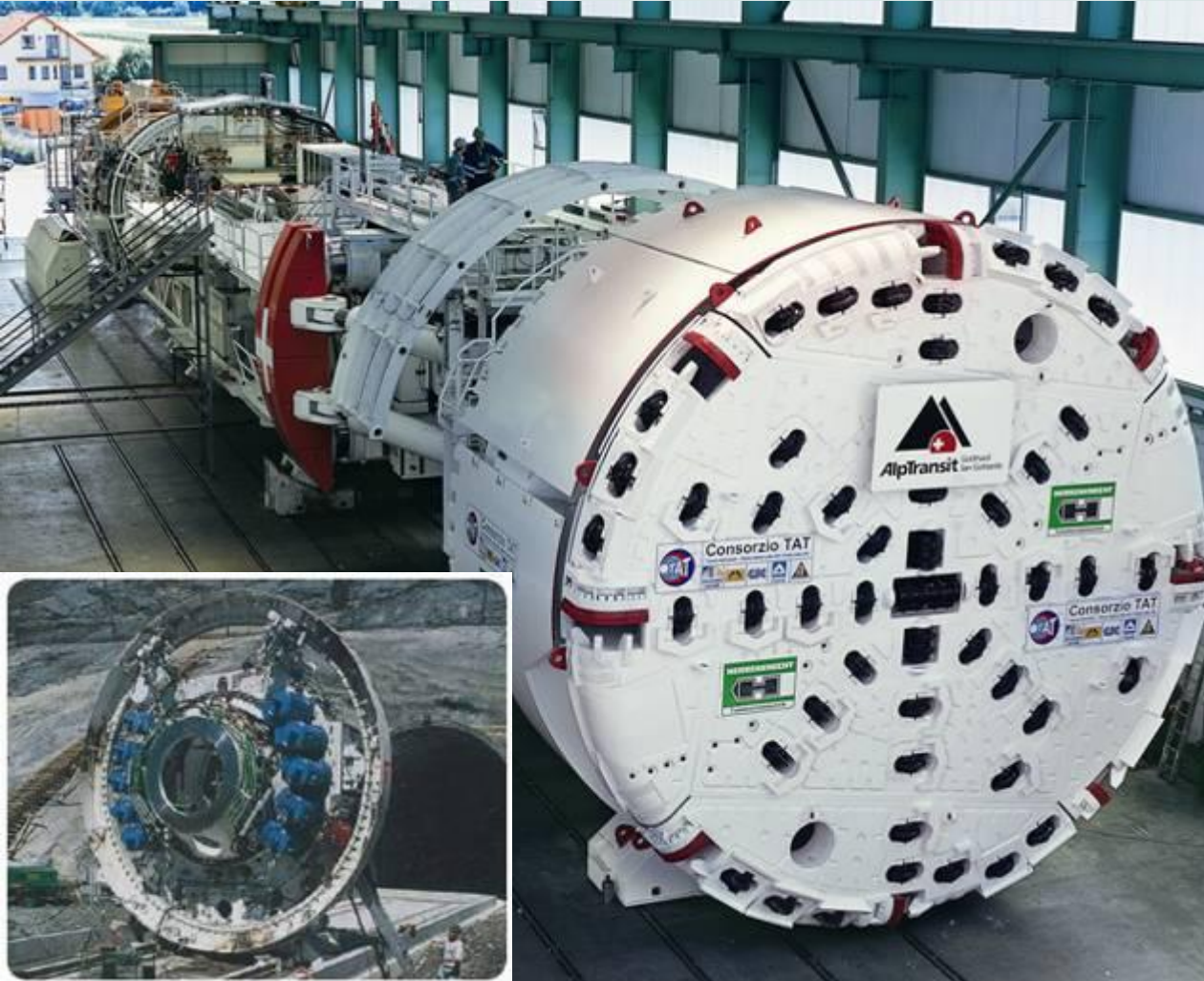


- Type: MKH435K04
- Power: 350 kW
- Voltage: 690 V
- Cooling: water - cooled
- Quantity: 2 x 14 pieces
- Appliance: Cutter Head Drive

Project: 4 TBM Ø 9,6m - Gotthard

Location: Switzerland

Year: since 2002



- Type: MKH435K04
- Power: 350 kW
- Voltage: 690 V
- Cooling: water - cooled
- Quantity: 4 x 10 pieces
- Appliance: Cutter Head Drive

Project: Pump-Drives for Mixshield

Location: Kuala Lumpur/Shanghai

Year: 2003/2005



- Type: MKH563K10
- Power: 1100 kW
- Voltage: 690 V
- Cooling: water - cooled
- Quantity: 19 pieces
- Type: MKH745E06
- Power: 750 kW
- Voltage: 690 V
- Cooling: water - cooled
- Quantity: 5 pieces
- Appliance: Feed and Slurry Pump

Project: 2 TBM Ø 15,4m – Chongming

Location: Shanghai

Year: 2005



- Type: MKH428Z04
- Power: 250 kW
- Voltage: 400 V
- Cooling: water - cooled
- Quantity: 2 x 16 pieces
- Appliance: Cutter Head Drive

- Type: MKH563K10
- Power: 1100 kW
- Voltage: 690 V
- Cooling: water - cooled
- Quantity: 2 x 6 pieces

- Type: MKH745E06
- Power: 750 kW
- Voltage: 690 V
- Cooling: water - cooled
- Quantity: 2 x 2 pieces

- Appliance: Feed and Slurry Pump

Project: **TBM Ø 10,5m – Halandsas**

Location: Sweden

Year: 2005



- Type: MKH731E04
- Power: 400 kW
- Voltage: 400 V
- Cooling: water - cooled
- Quantity: 10 pieces
- Appliance: Hydraulic Pump

Project: 2 TBM Ø 11,1m – Katzenberg

Location: Germany

Year: 2004



- Type: MKH731E04
- Power: 400 kW
- Voltage: 400 V
- Cooling: water - cooled
- Quantity: 2 x 10 pieces
- Appliance: Hydraulic Pump

Project: 2 TBM Ø 10,8m – Finnetunnel

Location: Germany

Year: 2008



- Type: MKH428X04
- Power: 200 kW
- Voltage: 400 V
- Cooling: water - cooled
- Quantity: 2 x 20 pieces
- Appliance: Cutter Head Drive

Project: **TBM Ø 15,1m – Madrid M30**

Location: Spain

Year: 2005



- Type: MKH745E04
- Power: 1000 kW
- Voltage: 690 V
- Cooling: water - cooled
- Quantity: 15 pieces
- Type: MKH7
- Power: 200-400 kW
- Voltage: 400 V
- Cooling: water - cooled
- Quantity: 3 pieces
- Appliance: Cutter Head Drive

Project: 2 TBM Ø 9,5m - Guadarrama

Location: Spain

Year: 2002

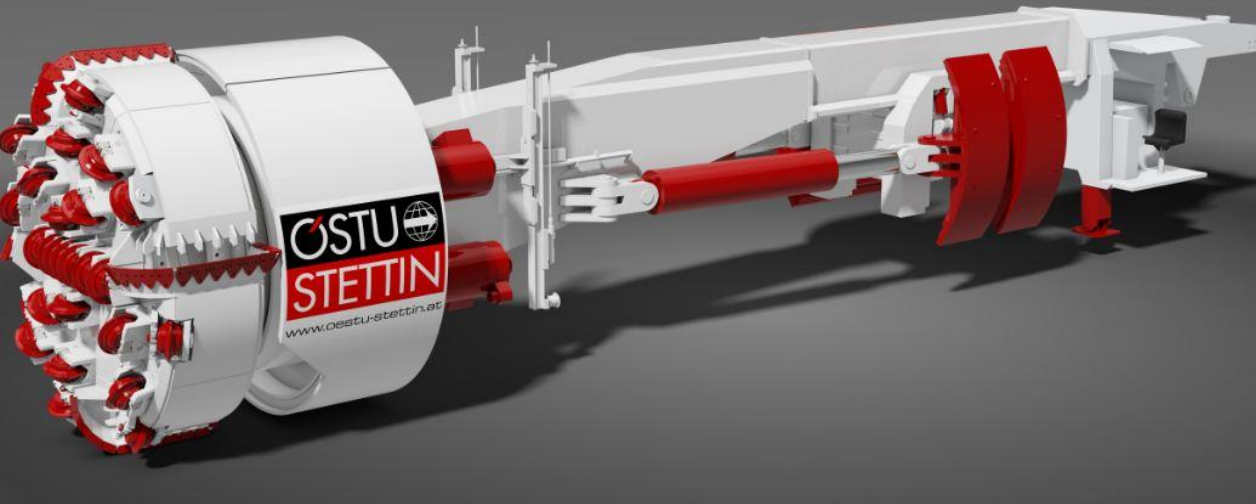


- Type: MKH640K06
- Power: 350 kW
- Voltage: 690 V
- Cooling: water - cooled
- Quantity: 2 x 12 pieces
- Appliance: Cutter Head Drive

Project: **TBM**

Location: Worldwide

Year: 2012

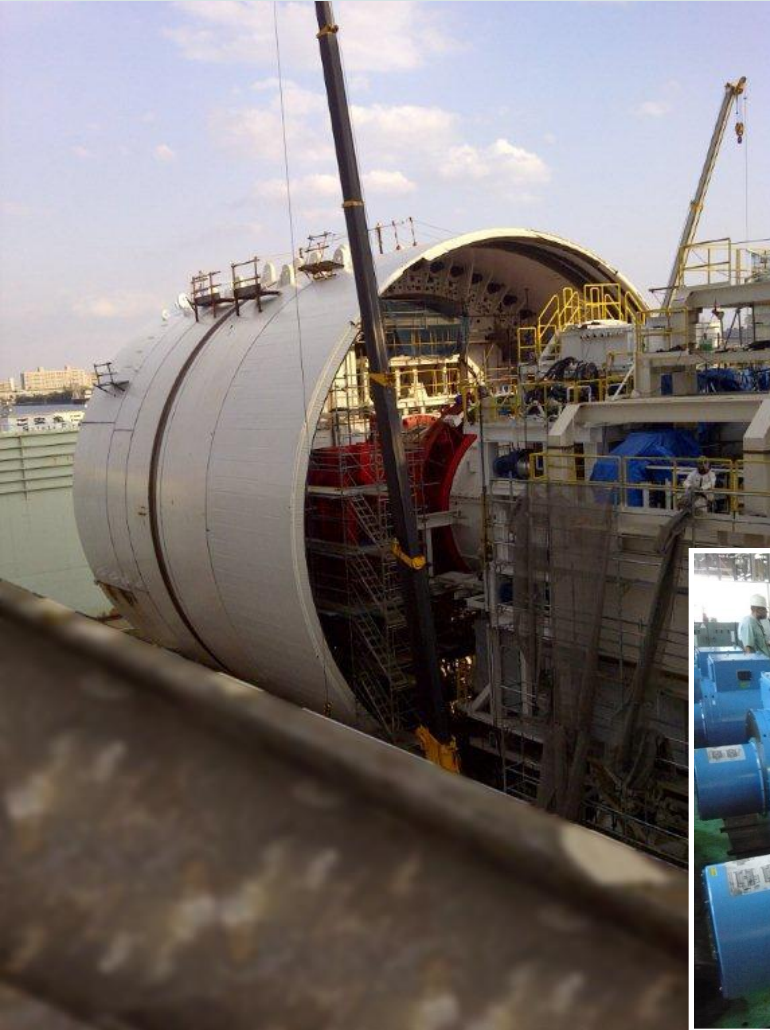


- Type: MKH435Z04
- Power: 187 kW
- Voltage: 380 V
- Cooling: water - cooled
- Quantity: 5 pieces
- Appliance: Cutter Head Drive

Project: **TBM Ø 17,45m**

Location: USA, Seattle, State Route 99

Year: 2012



- Type: MKH745X06
- Power: 560 kW
- Voltage: 690 V
- Cooling: water - cooled
- Quantity: 24 pieces
- Appliance: Cutter Head Drive



Project: **Raiseboring-Rig RBR900VF**

Location: Australia

Year: 2012



- Type: MKH725F06
- Power: 180 kW
- Voltage: 690 V
- Cooling: water - cooled
- Quantity: 4 pieces
- Application: Main Drive
- Raise \varnothing up to 6,3 m
- Reaming 900 kNm

Project: **Raiseboring-Rig Robbins 73RVF**

Location: Italy
Year: 2012



- Type: MKH735B06
- Power: 290 kW
- Voltage: 400 V
- Cooling: water - cooled
- Quantity: 1 piece
- Application: Main Drive
- Raise \varnothing 1,5 – 3,1 m
- Raise length 550 – 700 m
- Reaming 250 kNm

Project: **Deep Drilling Rig Terra Invader 250CL**

Location: North Sea

Year: 2011



courtesy of Herrenknecht

Drives for Hydraulic-Pump:

- Type: MKH735D04
 - Power: 500 kW
 - Voltage: 690 V
 - Cooling: water - cooled
 - Quantity: 4x pieces
-
- Project data:
Project Owner → Shell
Rig Owner → SWIFT Drilling BV
Drilling Contractor: NAM

Project: **Mobile Deep Drilling Rig VDD 400**

Location: New Zealand - Offshore

Year: Since 2013



Drives for Hydraulic-Pump

- Type: MKH745D04
- Power: 880 kW
- Voltage: 690 V
- Cooling: water - cooled
- Quantity: 2 pieces


Drives for Mud-Pump

- Type: MKH745B06
- Power: 660 kW
- Voltage: 690 V
- Cooling: water - cooled
- Quantity: 4 pieces

Project: **Mining**

Location: Worldwide
Year: since 1975



- Type: dMCV, dPRW, dMKH, d2PRW
- Power: 100 - 400 kW
- Voltage: 400 - 1140 V
- Cooling: water – cooled
- Protection class: ATEX 
EN 60079-Exd
- Quantity: 720 pieces
(01/1991 – 11/2012)
- Appliance: Mining and Tunneling

Project: **Mining**

Location: Worldwide
Year: since 1995



- Type: dMCV-425
- Power: 36 kW - 150 kW
- Voltage: 400 V – 1000 V
- Cooling: water - cooled
- Quantity: 81 pieces
- Appliance: Cutterhead drive of mining machine